

909 Scott St

THESE CATCH BASINS ARE ABANDONED AND ARE TO BE REMOVED BY THE CONTRACTOR ON THIS PROJECT

STA 6+00 = J.C.ANDRUS PT # 72 = BASELINE

STA 9+12.52 =

STORM MANHOLE # 1

STA 7+09, 38' LT

STORM MANHOLE # 2

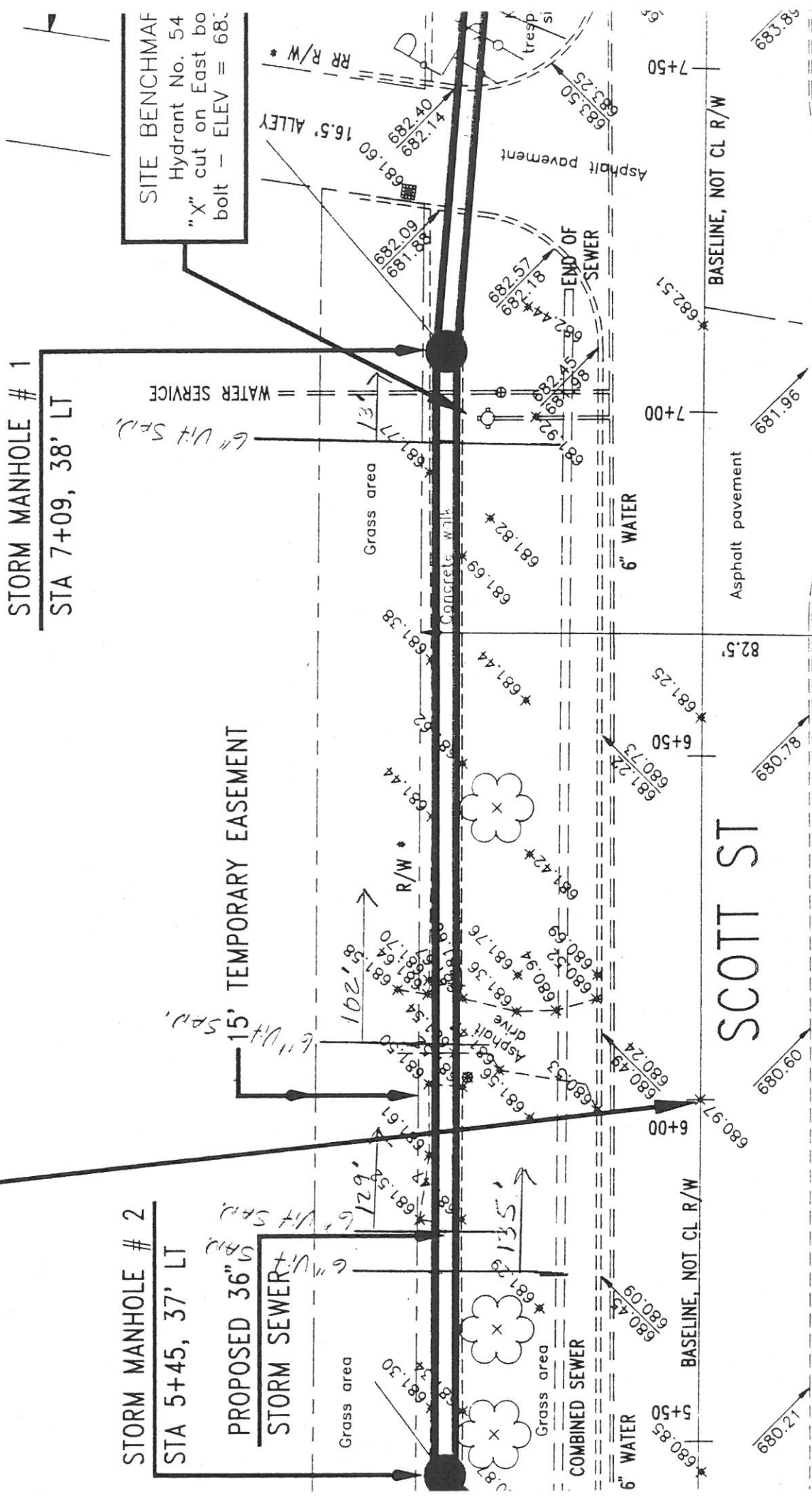
STA 5+45, 37' LT

PROPOSED 36" STORM SEWER

15' TEMPORARY EASEMENT

6" WATER SERVICE (Vt. Sp.)

SITE BENCHMARK Hydrant No. 54 "X" cut on East bolt - ELEV = 682.09



SCOTT ST

BASELINE, NOT CL R/W

BASELINE, NOT CL R/W

7+50

7+00

6+50

6+00

5+50

17.089

09.089

87.089

96.189

683.88